

REDUCE YOUR PRINTING COSTS

and environmental impact

PaperCutMF™

PaperCut MF provides unique eco-tracking capability that is only available with Toshiba e-Studio 306LP/RD30



PaperCut MF empowers you to control network printing by using page costs for colour, grayscale, page size and more in combination with:

- › monitoring
- › business rules
- › quotas
- › charging
- › detailed logging
- › reports

A COMPREHENSIVE SOLUTION...

“Find Me” Release Anywhere Printing

The modern creative office worker demands mobility and freedom. For this reason, PaperCut MF deploys a “Virtual Print Queue”, so that regardless of location, users can retrieve their print jobs from any printer on the network, where and when they choose.

To make it even easier, jobs are released with the wave of a proximity card.

Now, that's real flexibility at work.



Scanning an Proximity ID Card to release print job

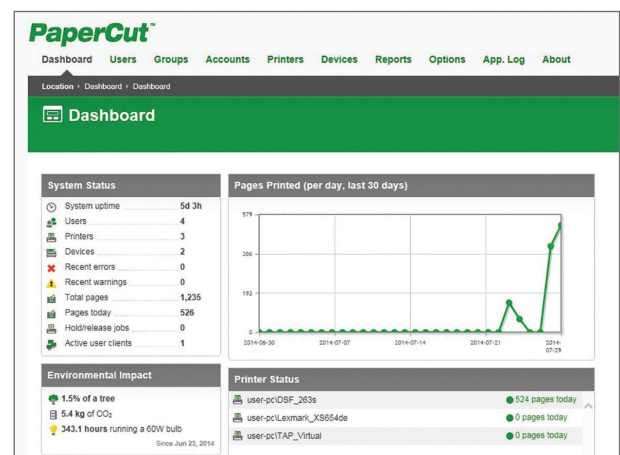
A solution for “Green” initiatives

The green washing of business is not a viable option. Today's environmentally conscience world demands real solutions.

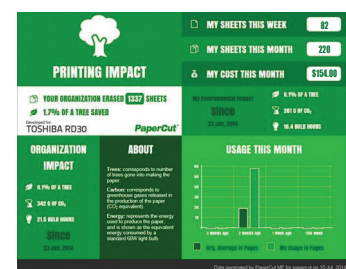
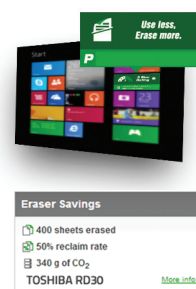
That's why PaperCut MF has in-built reporting and print controls that deliver real, quantifiable data. These tools will empower your business. Empower it with the ability to control waste, employ green initiatives and deliver the feedback you and your customers demand.

CO2 and Carbon emission reporting is also available in the form of handy widgets and dashboards.

At a glance, you can view your paper output in terms of CO2 produced and trees consumed, so you can make constructive steps to minimise waste and maximise those precious resources. Further Toshiba's world first MFP technology with erasable toner can reduce your paper usage by 80% and take your green initiatives to a whole new level.



Built-in reporting and print controls



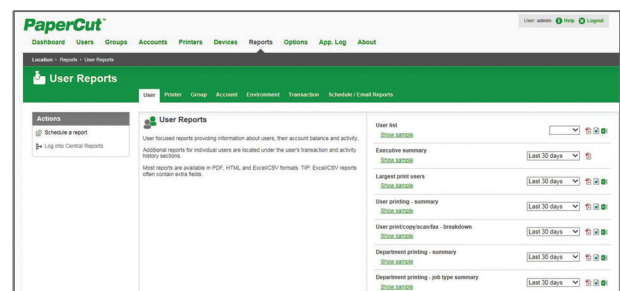
Dashboard to track environmental impact

Monitoring and Centralised Usage Reports

With over 80 standard reports to choose from, identifying the who, where and how much is printed, has now become a whole lot easier.

PaperCut MF provides the tools to monitor the output of your MFD fleet. This means, real time activity reports can be deployed silently to ease your staff into the new workflow changes.

Web Single Sign on (SSO) empowers both Administrators and End Users alike with convenient access to tools for configuration, tracking and monitoring of activities in real time.



User usage reporting screen

Mobile and BYOD

Convenience with accountability - user friendly solutions for your Mobile and BYOD users.

- › Google Cloud Print™
- › iOS Print
- › Driverless Web Print
- › Driverless Email Print
- › QR code release



Scanning a QR Code to release print job from mobile phone

Printing Policies

Advanced scripting can be used to define and finely tune your printing policies, and support your organisation in eliminating waste and changing user behavior.

With PaperCut you can:

- › Automatically route large jobs to high volume printers
- › Route printing of emails or web pages to the Toshiba erasable toner paper re-use system
- › Convert jobs to grayscale and duplex
- › Discourage or disable colour printing by user group
- › Least cost routing (suggest more cost effective devices based on conditions)
- › Allow free printing, for example, during class times
- › Define action by job attribute, user, group, period of day, device feature and type



Pop-up print policy alerts to route printing to Toshiba eco-MFP

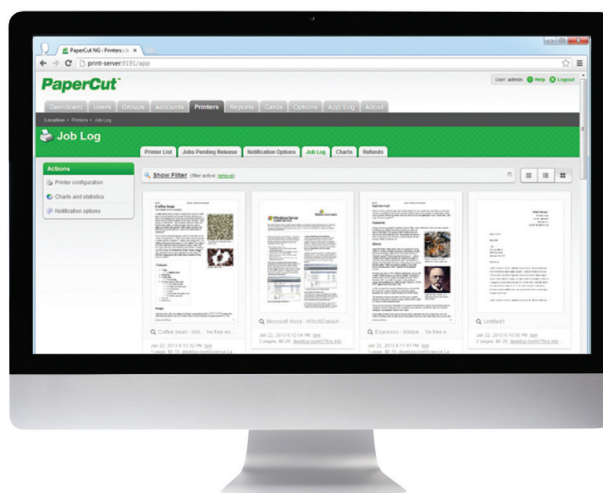
Print Archiving & Watermarking

Use Print Archiving to locate jobs and empower your organisation with auditing tools that visually identify what is being printed along with user level tracking and reporting functionality.

Watermarking enhances security and encourages responsible printing. Documents are identifiable by owner or origin.

Printed by Sally at 08/03/2011 3:46:43 PM

Example of watermarking



Quickly locate and track print jobs with visual archiving

SPECIFICATIONS

Scalability:

Suitable for networks of 5 to 500,000+ users

Architecture:

Single server or multi-server environments

Server Operating Systems:

Microsoft Windows Server (any edition including 64-bit and server core)

Mac OS X Server (10.4 or higher)

Linux (any modern distribution)

Novell OES Linux and iPrint

Directory Services:

Active Directory (native integration including nested groups and OU's)

OpenDirectory

eDirectory

LDAP

Workstation Operating Systems:

Microsoft Windows (any edition)

Mac OS X (10.4 or higher)

Linux (any modern distribution)

Unix Workstation (Java required to run client software)

MFDs/Printers:

Contact your authorised Toshiba service centre for most current details

Card Readers:

RFID Proximity

Barcode

Magnetic Stripes

Database Servers:

Self managing internal database: suitable for up to 5,000 end users

Microsoft SQL Server 2000/2005/2008/2012 (either 32 or 64 bit)

Microsoft SQL Express 2005/2008/2012 (free from Microsoft)

PostgreSQL 7.1 or higher

MySQL 5.0 or higher

Oracle 9.2 or higher

Cluster Environments:

Microsoft Failover Server

Microsoft Cluster Server

Veritas Cluster Server

Linux HA

Encryption:

SSL encryption used for sensitive client server communication.

Acknowledgements

Microsoft and Windows® are registered trademarks of Microsoft Corporation in the United States and/or other countries.

Mac OS® is a registered trademark of Apple Inc. AirPrint and the AirPrint logo are trademarks of Apple Inc.

© 2014 Google Inc. All rights reserved. Google Cloud Print™ web printing service is a trademark of Google Inc.

All other brand and/or product names are trademarks of their respective owners. PaperCut™ is a registered trademark of PaperCut Software International Pty Ltd. This brochure was compiled based on information that was accurate prior to product launch.

Product design and specifications are subject to change without notice. No part of this material may be used or reproduced in any manner whatsoever without permission.



Unit 2 Petersfield Business Park
Bedford Road
Petersfield
Hampshire
GU32 3QA
Tel: 0844 887 0200
Fax: 0844 887 0199
email: support@kewvisum.com

TOSHIBA
Leading Innovation >>>

