

Toshiba eStudio 338cs Setup (Including Wifi)

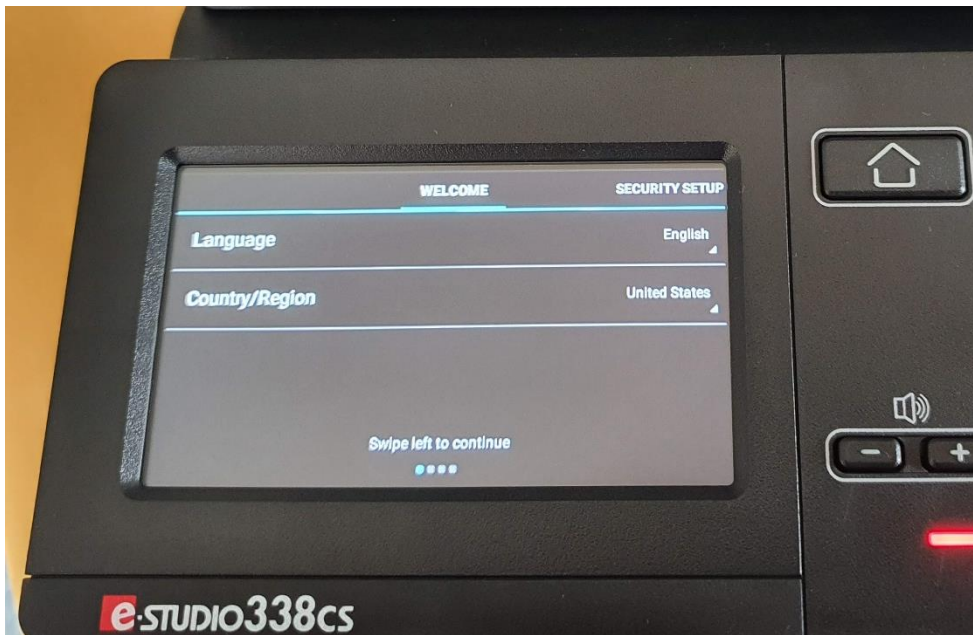
Unbox Machine (as per instructions included, removing all tape)



Plug machine in and Power on



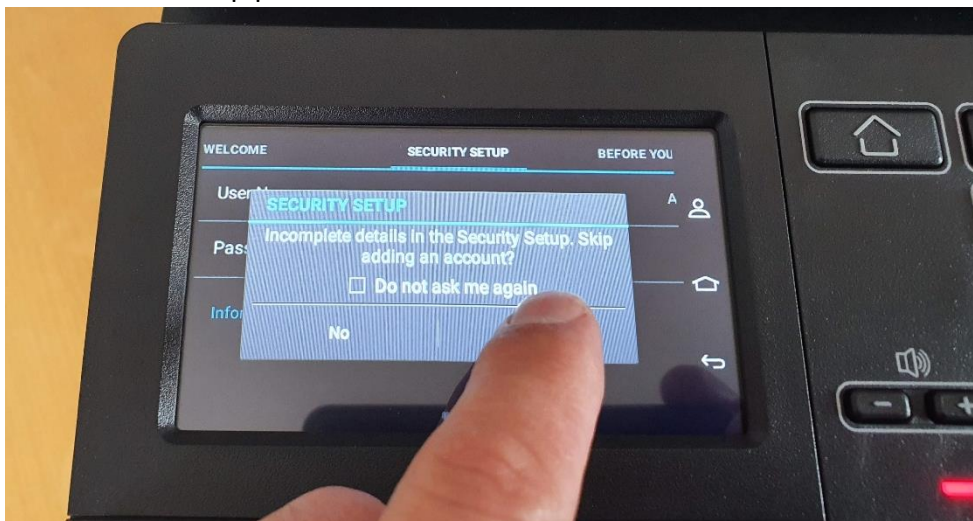
Set Language and Country/Region then swipe left



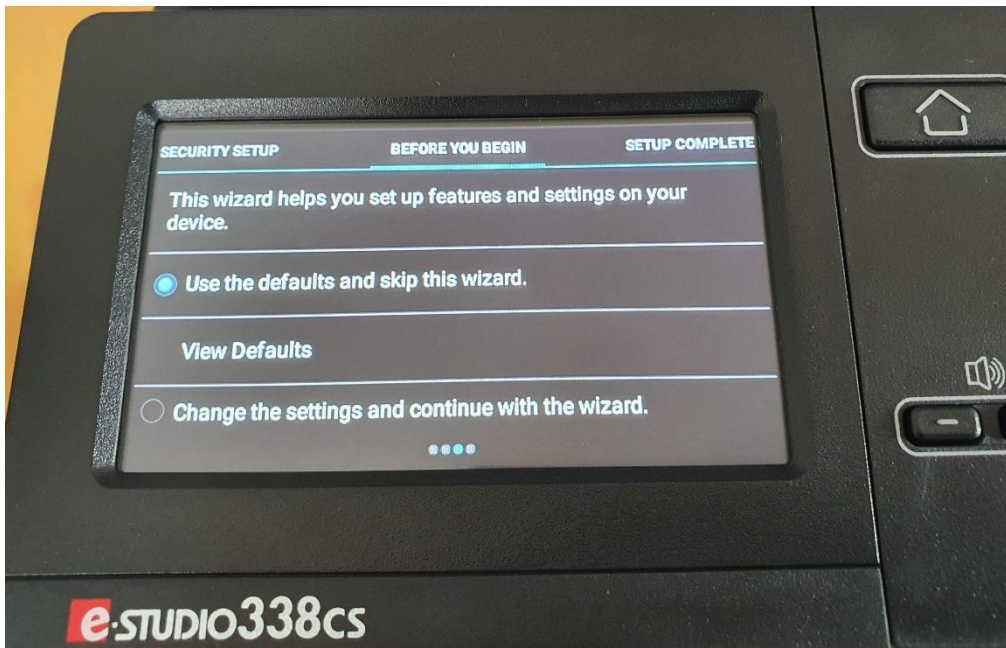
Skip setting password by swiping left



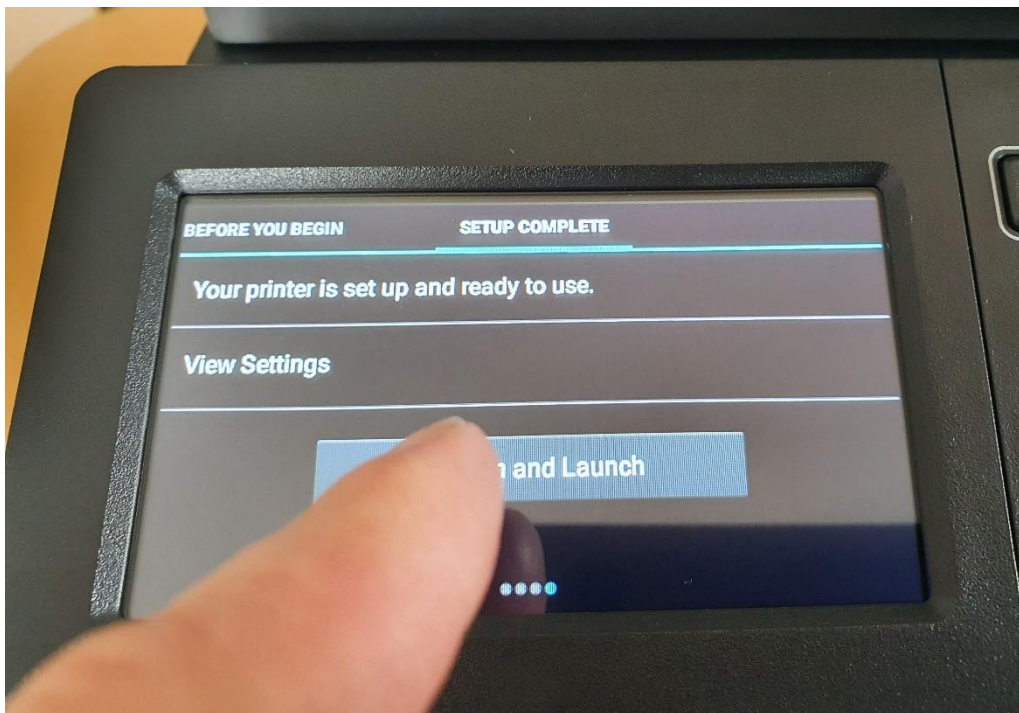
Press "YES" to skip password confirmation.



Swipe left to use default settings



Press "CONFIRM & LAUNCH"



End if not installing Wifi module

Wifi Setup

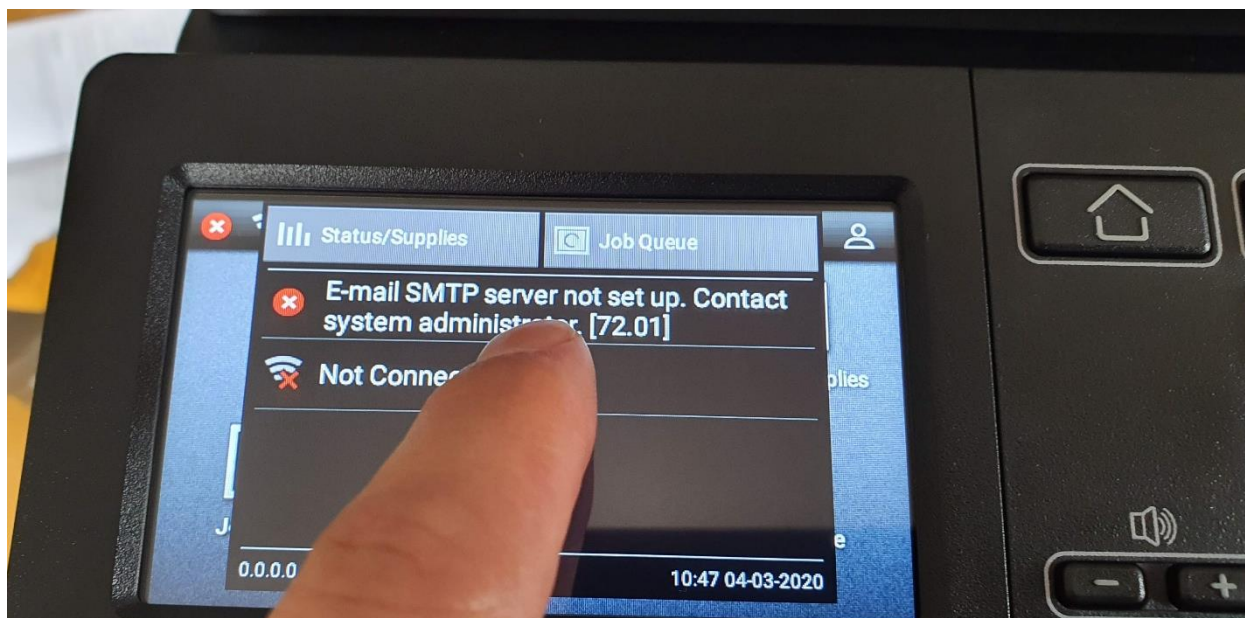
Plug Wifi Module into USB Slot



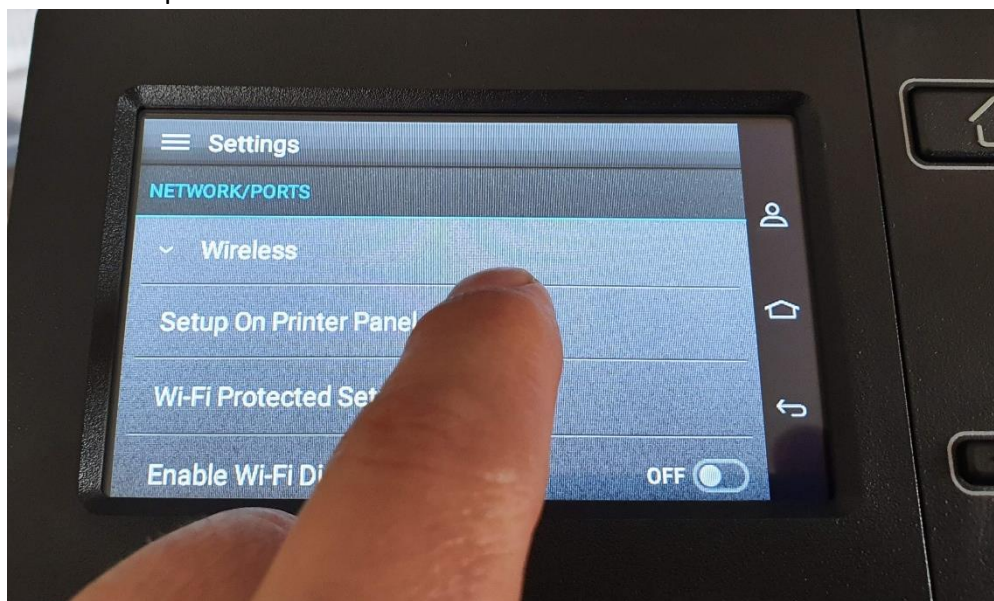
Press Wifi symbol in top bar of touchscreen



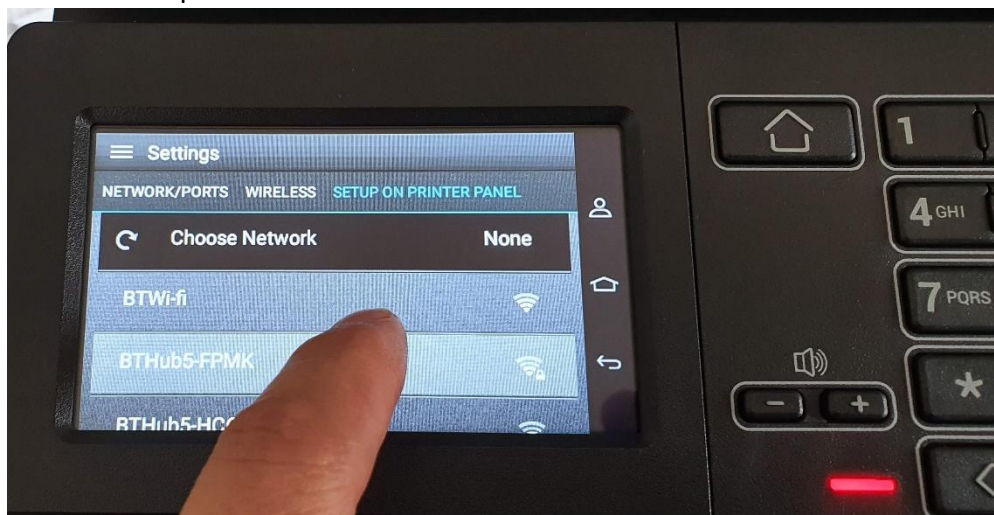
Select "Not Connected"



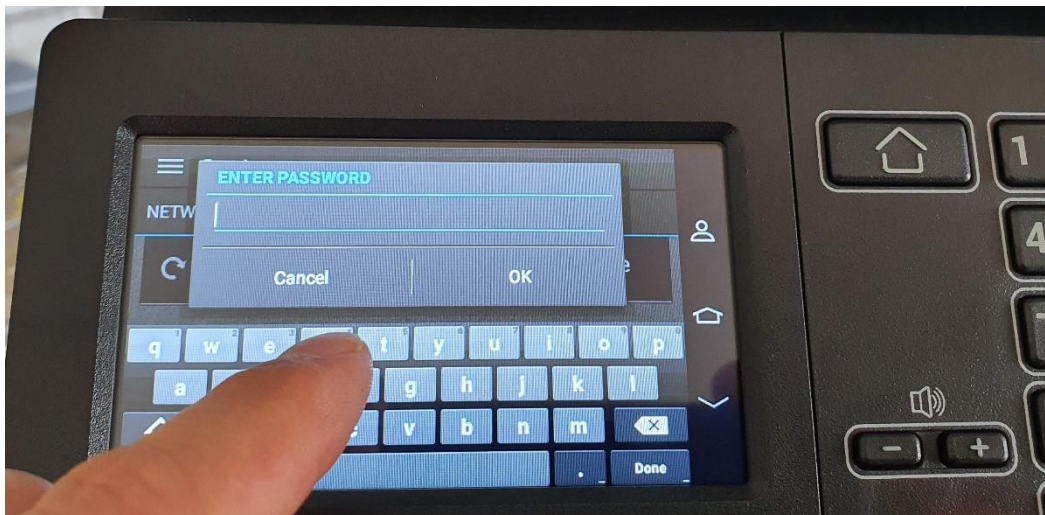
Select "Setup on Printer Panel"



Select the required Wifi



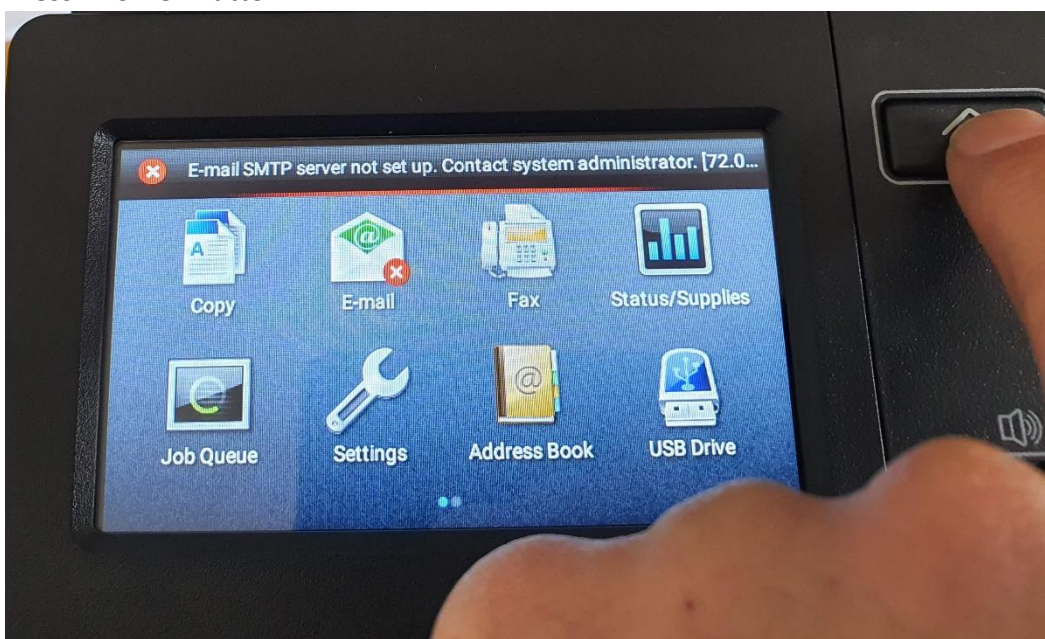
Input the wifi password



Press "OK"



Press "Home" Button



IP Address is displayed in Top Bar

